

Life cycle assessment considerations

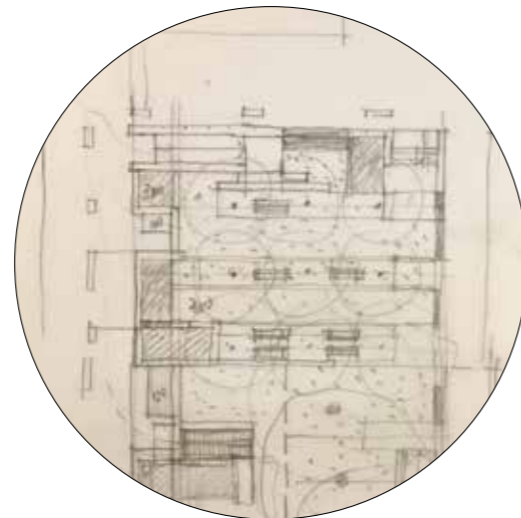


Policy, and strategic planning stage

Office / business emissions including flights and car trips to site.

Scope 1, 2 and 3 emissions.

1. Direct emissions
2. Indirect emissions
3. Downstream emissions



Design and documentation stage

Office / business scope 1,2 and 3 emissions including flights and car trips to site.



Construction stage emissions

GHG missions from the manufacture, transport and installation of the project including:

- Cement and Concrete
- Steel and aluminium
- Kiln dried timber

Transport related costs including contractors and your attendance on site.



The projects operational life

Emissions from maintenance equipment

Operational energy - eg irrigation and lighting

NO₂ emissions from fertiliser breakdown

CH₄ from the biological breakdown of material in wetlands

Plus side offsets from green infrastructure / trees sequestration.



Eventual demolition

Green house gas generation from the demolition, recycling, and re-use, including potential waste emissions such as methane from landfill.